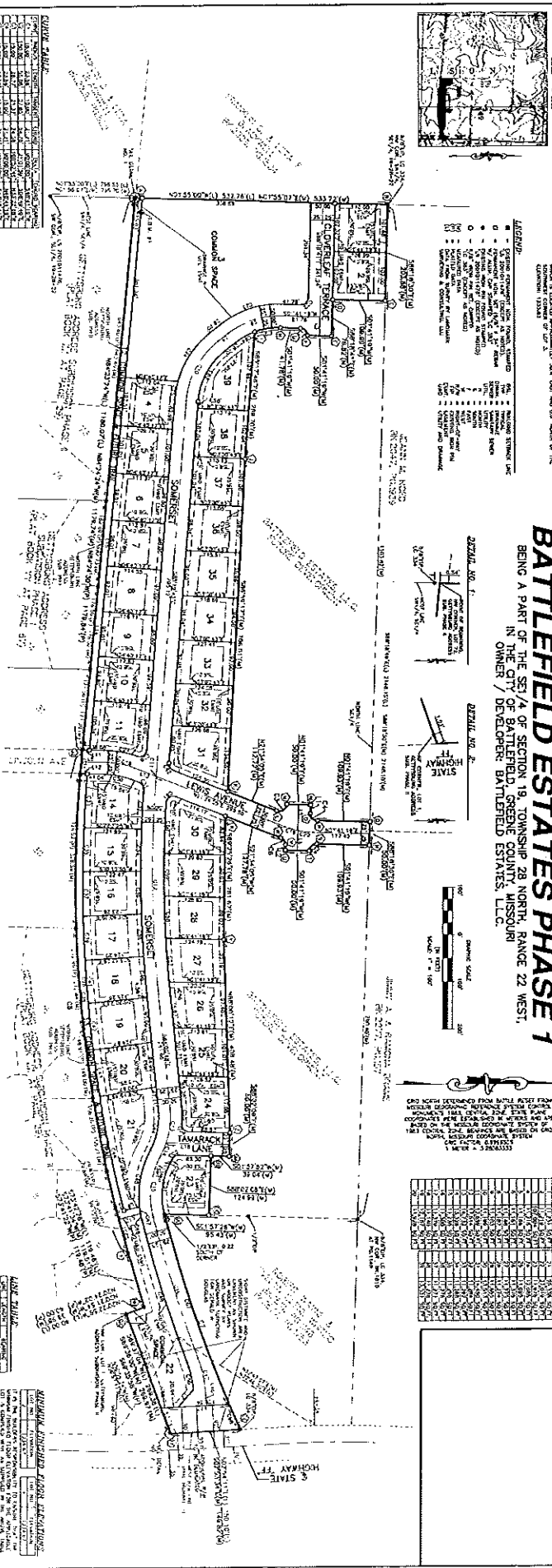


LEGEND

- 1. Easement
- 2. Easement
- 3. Easement
- 4. Easement
- 5. Easement
- 6. Easement
- 7. Easement
- 8. Easement
- 9. Easement
- 10. Easement
- 11. Easement
- 12. Easement
- 13. Easement
- 14. Easement
- 15. Easement
- 16. Easement
- 17. Easement
- 18. Easement
- 19. Easement
- 20. Easement
- 21. Easement
- 22. Easement
- 23. Easement
- 24. Easement
- 25. Easement
- 26. Easement
- 27. Easement
- 28. Easement
- 29. Easement
- 30. Easement
- 31. Easement
- 32. Easement
- 33. Easement
- 34. Easement
- 35. Easement
- 36. Easement
- 37. Easement
- 38. Easement
- 39. Easement
- 40. Easement
- 41. Easement
- 42. Easement
- 43. Easement
- 44. Easement
- 45. Easement
- 46. Easement
- 47. Easement
- 48. Easement
- 49. Easement
- 50. Easement
- 51. Easement
- 52. Easement
- 53. Easement
- 54. Easement
- 55. Easement
- 56. Easement
- 57. Easement
- 58. Easement
- 59. Easement
- 60. Easement
- 61. Easement
- 62. Easement
- 63. Easement
- 64. Easement
- 65. Easement
- 66. Easement
- 67. Easement
- 68. Easement
- 69. Easement
- 70. Easement
- 71. Easement
- 72. Easement
- 73. Easement
- 74. Easement
- 75. Easement
- 76. Easement
- 77. Easement
- 78. Easement
- 79. Easement
- 80. Easement
- 81. Easement
- 82. Easement
- 83. Easement
- 84. Easement
- 85. Easement
- 86. Easement
- 87. Easement
- 88. Easement
- 89. Easement
- 90. Easement
- 91. Easement
- 92. Easement
- 93. Easement
- 94. Easement
- 95. Easement
- 96. Easement
- 97. Easement
- 98. Easement
- 99. Easement
- 100. Easement

# BATTLEFIELD ESTATES PHASE 1

BEING A PART OF THE SE 3/4 OF SECTION 19, TOWNSHIP 28 NORTH, RANGE 22 WEST, IN OWNER / DEVELOPER: BATTLEFIELD ESTATES, L.L.C.



LOT NO.	ACRES	OWNER
1	0.12	...
2	0.12	...
3	0.12	...
4	0.12	...
5	0.12	...
6	0.12	...
7	0.12	...
8	0.12	...
9	0.12	...
10	0.12	...
11	0.12	...
12	0.12	...
13	0.12	...
14	0.12	...
15	0.12	...
16	0.12	...
17	0.12	...
18	0.12	...
19	0.12	...
20	0.12	...
21	0.12	...
22	0.12	...
23	0.12	...
24	0.12	...
25	0.12	...
26	0.12	...
27	0.12	...
28	0.12	...
29	0.12	...
30	0.12	...
31	0.12	...
32	0.12	...
33	0.12	...
34	0.12	...
35	0.12	...

**CERTIFICATE OF OWNERSHIP AND DEDICATION**

I, the undersigned, do hereby certify that the owners of the property described in the foregoing plat, to-wit: Battlefield Estates, L.L.C., do hereby dedicate to the public use of the City of Battlefield, Missouri, the roads, easements, and other interests therein shown on the foregoing plat, and that the same are to be held in trust for the use and benefit of the public.

*[Signature]*

**CERTIFICATE OF APPROVAL-BOARD OF ALDERMEN**

Resolved, that the Board of Aldermen of the City of Battlefield, Missouri, do hereby approve the foregoing plat, and that the same be recorded in the public records of the State of Missouri.

*[Signature]*

**GENERAL PLAT REQUIREMENTS**

1. The plat shall be prepared in accordance with the provisions of the Missouri Revised Statutes, Chapter 208, Sections 208.010 to 208.100.

2. The plat shall be prepared in accordance with the provisions of the Missouri Revised Statutes, Chapter 209, Sections 209.010 to 209.100.

3. The plat shall be prepared in accordance with the provisions of the Missouri Revised Statutes, Chapter 210, Sections 210.010 to 210.100.

**DESCRIPTION**

The following is a description of the property shown on the foregoing plat, to-wit: Battlefield Estates, L.L.C., being a part of the SE 3/4 of Section 19, Township 28 North, Range 22 West, in the City of Battlefield, Missouri.

**SHAFER & JONES**  
CONSULTING ENGINEERS, INCORPORATED, MISSOURI (LAW OFFICE)  
1101 NORTH MAIN, WARREN, MISSOURI  
TEL: 636-241-2323  
FAX: 636-241-2324

**BATTLEFIELD ESTATES, L.L.C.**  
PREPARED FOR:  
BATTLEFIELD ESTATES, L.L.C.  
3000 W. STATE ST., SUITE 100  
BATTLEFIELD, MISSOURI 64501

**DATE:** 12-28-07  
**DRAWN BY:** D.M. JONES  
**CHECKED BY:** M.C. JONES  
**SCALE:** AS SHOWN  
**DRAWING NO.:** 0002